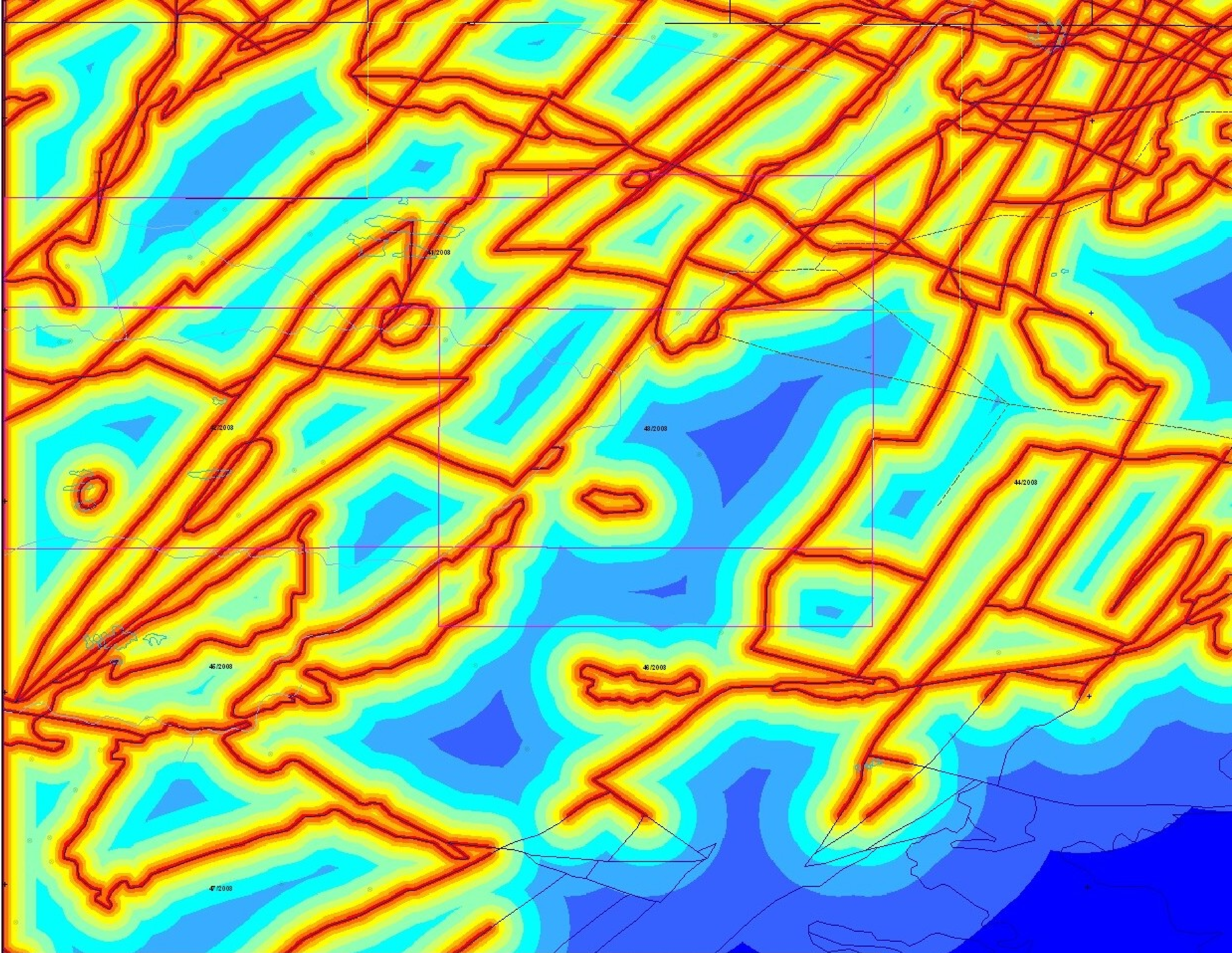


Legend

- 1 PROXIMITY PRIORITY
- 2
- 3
- ⊕ 1 SCOTT HOGG PRIORITY
- ⊕ 2
- ⊕ 3
- GRID GEOPHYSICS
- GCWIHABA ANOMALIES
 - NOT PICKED
 - ▲ PICKED ANOMALIES
- ASHTON (NOT DRILLED)
 - 85/97.01
- KIM SAMPLE
 - yes
- RESULTS
 - In test G9 gave twill DI client
 - no KIM's bit good mag. grav. s.kj
 - no indicator minerals recovered
 - poked bit not sampled
- pit
- settlement labels roads
- tracks
- water course
- ▭ retained PLs
- ▭ New application
- ▭ Previous outline
- ▭ Botswana border



(All target symbols and coordinate listings have been removed from this plot.)

Map of showing status of kimberlite target exploration Gcwihaba PLs. The proximity priority is shown relative to buffered faults / lithological contacts. (Map produced April 2006)